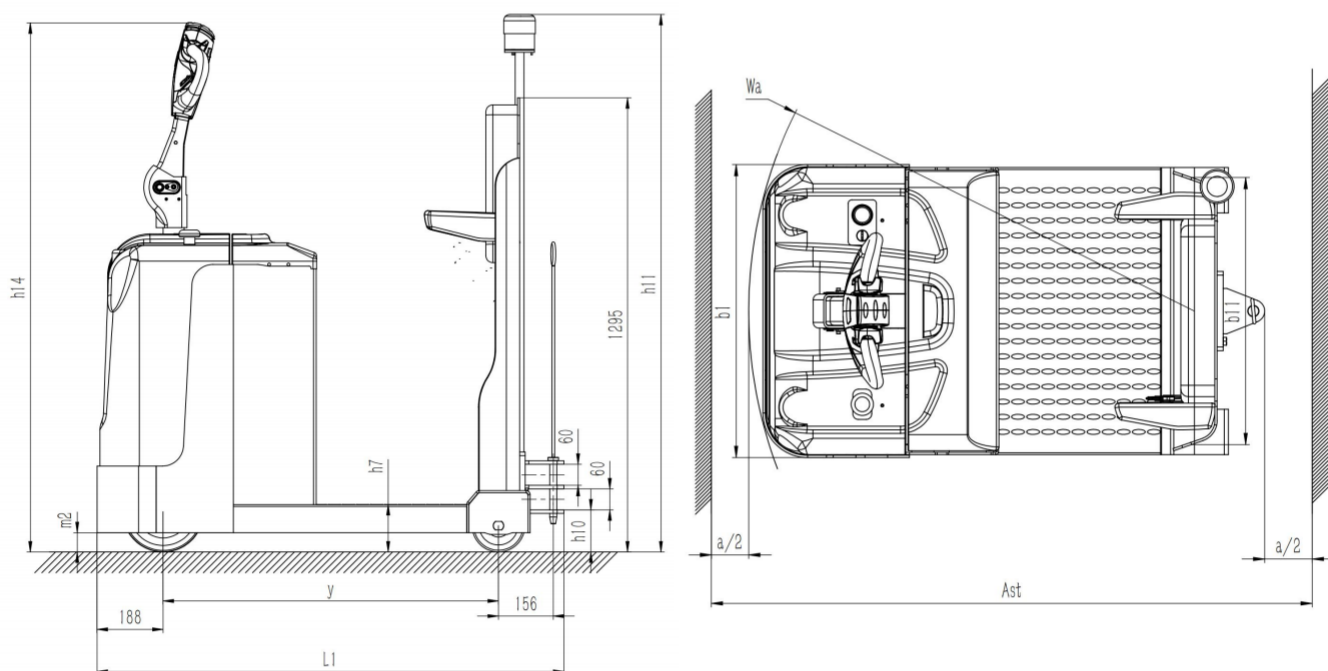


产品参数 Product parameter

| 型号 | Models | | QDD20A | QDD30A | QDD50A |
|----------------------|---|---------|-----------|-----------|-----------|
| 驱动方式 | Drive mode | | 电动 | 电动 | 电动 |
| 驾驶方式 | Driving Models | | 站驾式 | 站架式 | 站驾式 |
| 额定载荷 | Rated load | Q(kg) | 2000 | 3000 | 5000 |
| 轴距 | Wheelbase | y(mm) | 955 | 955 | 990 |
| 牵引座高度 | Height of traction seat | h10(mm) | 60/120 | 60/120 | 194/274 |
| 车体高度 | Body height | h11(mm) | 1540 | 1540 | 1615 |
| 整车重量 (含电池) | Vehicle weight (including batteries) | kg | 630 | 630 | 1130 |
| 轴负载, 空载时前/后轴 | Axle load, front/rear axle under no load | kg | 213/417 | 213/417 | 311/819 |
| 轮子 | Wheels | | 聚氨酯轮 | 聚氨酯轮 | 聚氨酯轮 |
| 轮子尺寸, 前轮 | Wheel size, front wheel | | φ230x75 | φ230x75 | φ230x75 |
| 轮子尺寸, 后轮 | Wheel size, rear wheel | | φ150x50 | φ150x50 | φ210x85 |
| 轮子, 前后数量 (X=驱动轮) | Number of wheels, front and rear (x = driving wheels) | | 1x/2 | 1x/2 | 1x/2 |
| 后轮轮距 | Rear wheel base | b11(mm) | 662 | 662 | 622 |
| 操作手柄高度 | Height of operation handle | h14(mm) | 1510 | 1510 | 1510 |
| 总体长度 | Total length | L1(mm) | 1330 | 1330 | 1350 |
| 总体宽度 | Overall width | b1(mm) | 780 | 780 | 780 |
| 离地间隙 | Ground clearance | m2(mm) | 55 | 50 | 55 |
| 转弯半径 | Turn radius | Wa(mm) | 1182 | 1182 | 1215 |
| 行驶速度, 满载/空载 | Speed, full load/no load | Km/h | 4.0/5.0 | 4.0/5.0 | 4.0/5.0 |
| 爬坡度, 满载/空载 (S2-5min) | Climb, full load/no load (S2-5MIN) | % | 3.0/8.0 | 3.0/8.0 | 3.0/8.0 |
| 制动方式 | Braking mode | | 电磁制动 | 电磁制动 | 电磁制动 |
| 驱动电机功率 (S2-60min) | Drive Motor Power (S2-60MIN) | KW | 24V/1.6KW | 24V/1.6KW | 24V/2.2KW |
| 蓄电池, 电压/额定容量 | Battery, voltage/rated capacity | V/Ah | 24V/210A | 24V/210A | 24V/280A |
| 电池重量 | Weight of battery | kg | 190 | 190 | 245 |



本公司保留更改产品设计和规格的权利、参数若有改变、恕不另行通知

Our company reserves the right to change product design and specifications without prior notice.